



Randall Road Improvements Study

Community Advisory Council

Meeting #8

April 10, 2008

9:30 am

Lake in the Hills Village Hall

600 Harvest Gate

Lake in the Hills, IL



HDR



Agenda for Meeting #8

- Introductions
- Approval of May 6, 2008 Meeting Notes
- Summary of CAC Meeting #7
- Review Alternative Packages for Level 3.
Detailed Evaluation
- Review Environmental Resources in Study Area
- Focus for CAC Meeting #9





GATEWAY TO MCHENRY COUNTY

Introductions

- Modify membership list as required to account for:
 - Incorrect or outdated information
 - Changes in Representation
 - New members



HDR



Comments to Meeting Notes?

- Discussion of CAC #7 meeting notes
 - Approval of CAC #7 meeting notes



HDR

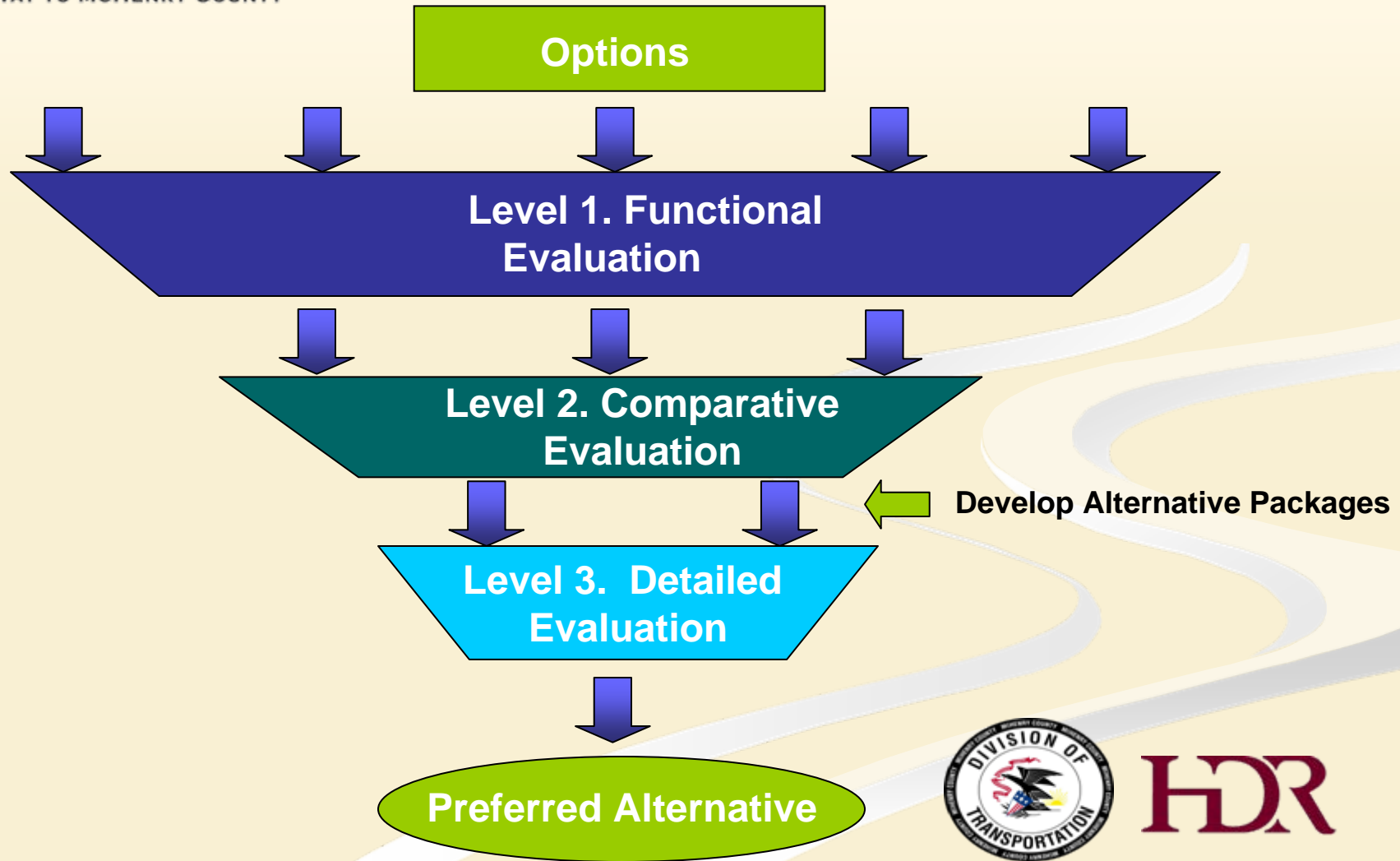


Summary of CAC Meeting #7

- Reviewed 2030 Traffic Volume Projections
- Reviewed facilities with similar traffic to the Randall Road 2030 Traffic Volumes
- Reviewed Evaluation Status/Results for Level 2. Comparative Evaluation
- Reviewed 2 new options
 - Quadrant Roadway intersection option for the Randall Rd and Algonquin Rd intersection
 - Continuous Green-T intersection option for tee intersections with Randall Rd (Village Rd, Angela Ln, Alexandra Blvd)



Evaluation Process





Alternative Packages for Level 3. Detailed Eval.

- Developed from the best scoring options
- One alternative considers all the best scoring pedestrian options
- Alternatives to be screened through the final level, Level 3, Detailed Evaluation
- Detailed traffic operations analyses to be conducted for intersections that are considered project omissions





Alternative Packages for Level 3. Detailed Eval.

- Preferred Alternative may be a combination of options from the alternatives evaluated
- Options within an alternative may not be feasible from a design perspective once more detailed design is undertaken



HDR



Alternative Packages for Level 3. Detailed Eval.

Alternative 1

Six Lanes

Intersections with Randall Road (in order from south to north):

- County Line Road: No improvements anticipated (project omission, intersection addressed with the Algonquin Commons and Galleria developments)
- Harnish Drive: No improvements anticipated (project omission, intersection addressed with the JC Penny development)
- Bunker Hill Road: Additional Turning Lanes
- Stonegate Road: Eliminate Access
- Algonquin Road: Modified Diamond Interchange (SPUI)
- Acorn Lane/Polaris Drive: Modify access based on space allowable from improvements to Algonquin Road
- Miller Road: Additional Turning Lanes
- Village Road: Close Access and divert traffic to Angela Lane through Carlemont Drive
- Angela Lane: Additional turning lanes and signalize (with a traditional traffic signal application)
- Alexandra Lane: Close Access and divert traffic to Angela Lane through Carlemont Drive
- Ackman Road: No improvements anticipated (project omission, intersection being addressed with the Rakow Road Improvements Study)



HDR



Alternative Packages for Level 3. Detailed Eval.

■ Pedestrian Alternative

Alternative 1b*

Same as Alternative 1 with the following Pedestrian/Bicycle Options:

- Multiuse path along the east and west sides of Randall Road
- An underpass at the Woods Creek culvert and an overpass at the parks (Richard Taylor Park to Ken Carpenter Park), Miller Road, near Jacobs High School/Algonquin Library, and near Angela Lane

- Being evaluated to develop an understanding of the additional impacts pedestrian/bicycle improvements will have on the alternatives
- Options can be applied to any alternative



HDR



Alternative Packages for Level 3. Detailed Eval.

Alternative 2

Six Lanes/HOV, 4 general purpose lanes and 2 high occupancy vehicle (HOV) lanes

Intersections with Randall Road (in order from south to north):

- County Line Road: No improvements anticipated (project omission, intersection addressed with the Algonquin Commons/Galleria/JC Penny developments)
- Harnish Drive: No improvements anticipated (project omission, intersection addressed with the JC Penny development)
- Bunker Hill Road: Additional Turning Lanes
- Stonegate Road: Eliminate Access
- Algonquin Road: Grade Separated Turning Movements
- Acorn Lane/Polaris Drive: Modify access based on space allowable from improvements to Algonquin Road
- Miller Road: Additional Turning Lanes
- Village Road: Close Access and divert traffic to Angela Lane through Carlemont Drive
- Angela Lane: Additional turning lanes and signalize (with the continuous Green-T application)
- Alexandra Lane: Close Access and divert traffic to Angela Lane through Carlemont Drive
- Ackman Road: No improvements anticipated (project omission, intersection being addressed with the Rakow Road Improvements Study)



HDR



Alternative Packages for Level 3. Detailed Eval.

Alternative 3

Six Lanes

Intersections with Randall Road (in order from south to north):

- County Line Road: No improvements anticipated (project omission, intersection addressed with the Algonquin Commons/Galleria/JC Penny developments)
- Harnish Drive: No improvements anticipated (project omission, intersection addressed with the JC Penny development)
- Bunker Hill Road: Additional Turning Lanes
- Stonegate Road: Additional Turning Lanes and Signalize
- Algonquin Road: Additional Turning Lanes
- Acorn Lane/Polaris Drive: No improvements anticipated (No-action)
- Miller Road: Additional Turning Lanes
- Village Road: Convert to Right-in/Right-out intersection
- Angela Lane: Additional Turning Lanes and signalize (with a traditional traffic signal application)
- Alexandra Lane: Convert to Right-in/Right-out intersection
- Ackman Road: No improvements anticipated (project omission, intersection being addressed with the Rakow Road Improvements Study)



HDR



Alternative Packages for Level 3. Detailed Eval.

- Breakout Session (10 minutes each station)
- Visit geometry stations to review Alternative Packages
- Ask questions
- Comment on Alternative Packages/Reach Consensus on Alternatives Moving Forward





Review of Alternative Packages

- Use this opportunity to stand up for your organization.
- Remember: Purpose of CAC is to be a liaison between the public and McHenry County...
- Let us know if you have any issues.
- The project team is available upon request to meet individually with your organization.



HDR



Review of Alternative Packages

- What features/options were you excited to see in the Alternatives?
- What stood out or surprised you about an Alternative?
- Is there any feature/option that you were surprised not to see?
- Will the organization you represent have any questions?



HDR



GATEWAY TO MCHENRY COUNTY

Environmental Resources

- All potential impacts will be identified using federal, state, and local guidance
- Potential mitigation measures will be identified
- Agency coordination will be conducted
 - Federal Highway Administration,
 - Army Corps of Engineers,
 - Department of Natural Resources,
 - Local municipalities,
 - Environmental Protection Agency,
 - Among others...
- Design of Preferred Alternative will be modified to avoid or minimize impacts



HDR



GATEWAY TO MCHENRY COUNTY

Environmental Resources

■ Agricultural Resources

- 2 agricultural fields identified

■ Air Quality

- Study area located in non-attainment area





Environmental Resources

■ Biological Resources (including T&E species)

- IDOT is conducting environmental surveys to identify resources
- A tree survey was conducted in 2007
- Wetland delineations were performed in 2007
- Streams, Wetlands, Fens, Floodplains, Detention Ponds, and natural areas are located within study area





GATEWAY TO MCHENRY COUNTY

Environmental Resources

- **Cultural Resources (historic and archaeological resources)**
 - IDOT performed survey for cultural resources
 - No historic or archaeological resources identified within the study area

- **Socioeconomics**
 - Identifying public facilities, proposed developments
 - Reviewing Zoning and Land Use Plans
 - Based on U.S. Bureau of Census data, no low-income or minority areas were identified within the study area



HDR



Environmental Resources

- **Public Lands and Section 4(f) resources**
 - Ken Carpenter Park (near Miller Road)
 - Richard Taylor Park (near Miller Road)
 - Multi-use path along Bunker Hill Rd/Huntington Dr
 - Other trails and bike paths

Section 4(f) Resources include:

Publicly-Owned Public Parks,
Recreational Areas, or Wildlife or
Waterfowl Refuges

Historic sites and/or archaeological
sites on or eligible for the National
Register of Historic Places





GATEWAY TO MCHENRY COUNTY

Environmental Resources

- **Public Lands and Section 4(f) resources**
 - Ken Carpenter Park (near Miller Road)
 - Richard Taylor Park (near Miller Road)
 - Multi-use path along Bunker Hill Rd/Huntington Dr
 - Other trails and bike paths

Section 4(f) Resources include:

Publicly-Owned Public Parks,
Recreational Areas, or Wildlife or
Waterfowl Refuges

Historic sites and/or archaeological
sites on or eligible for the National
Register of Historic Places





GATEWAY TO MCHENRY COUNTY

Environmental Resources

- **Public Lands and Section 4(f) resources**
 - Ken Carpenter Park (near Miller Road)
 - Richard Taylor Park (near Miller Road)
 - Multi-use path along Bunker Hill Rd/Huntington Dr
 - Other trails and bike paths

Section 4(f) Resources include:

Publicly-Owned Public Parks,
Recreational Areas, or Wildlife or
Waterfowl Refuges

Historic sites and/or archaeological
sites on or eligible for the National
Register of Historic Places





GATEWAY TO MCHENRY COUNTY

Environmental Resources

- **Public Lands and Section 4(f) resources**
 - Ken Carpenter Park (near Miller Road)
 - Richard Taylor Park (near Miller Road)
 - Multi-use path along Bunker Hill Rd/Huntington Dr
 - Other trails and bike paths

Section 4(f) Resources include:

Publicly-Owned Public Parks,
Recreational Areas, or Wildlife or
Waterfowl Refuges

Historic sites and/or archaeological
sites on or eligible for the National
Register of Historic Places





GATEWAY TO MCHENRY COUNTY

Environmental Resources

■ Special Waste

- 14 locations identified as potential special waste sites
- Mostly gas stations and dry cleaners
- Additional field work will be conducted this spring





GATEWAY TO MCHENRY COUNTY

Environmental Resources

■ Traffic Noise

- Identifying receptors
- Traffic Noise readings will be taken this spring
- Receptors include residences, businesses, schools, churches, recreational facilities
- Traffic Noise models are being developed to determine potential impacts

■ Water Resources

- Delineated Wetlands
- Identified Floodplains, Streams, Ponds



HDR



GATEWAY TO MCHENRY COUNTY

Focus of CAC Meeting #9

- Review Results of Level 3. Detailed Evaluation
- Review geometry of Alternative Packages
 - Proposed ROW
 - Minor geometric adjustments
- Identify Preferred Alternative



HDR



GATEWAY TO MCHENRY COUNTY

Questions or Comments?

- **Next CAC Meeting (#9) – June 5, 2008**
- Same Location
- Please sign-in if have not done so
- Please leave nametags behind for reuse at next meeting



HDR